

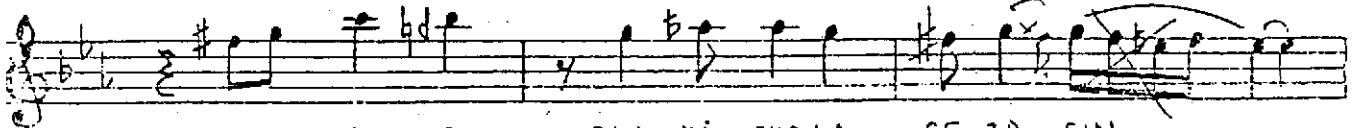
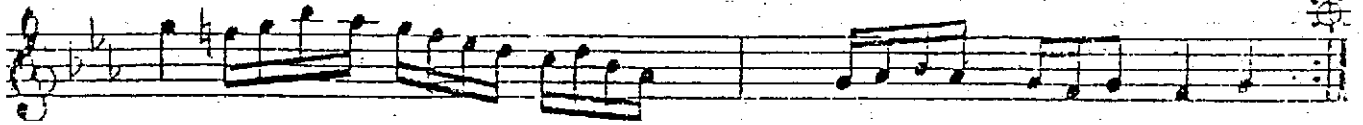
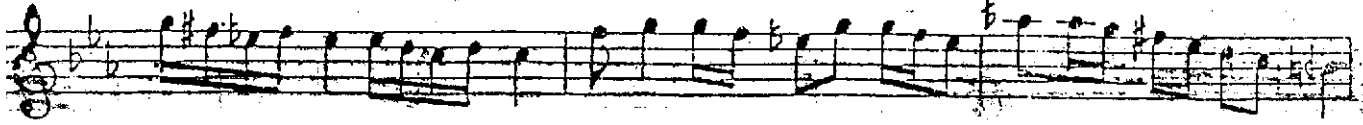
KÜRDİLİHİCAZKÂR ŞARKI  
-KADERİMDE SANKİ SUÇLA CEZÂSIN-

USÛLÜ: DÜYEK  
♩ = 160

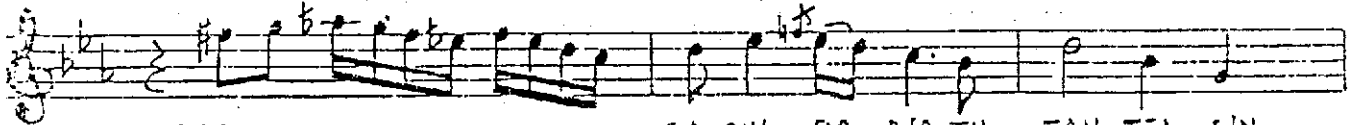
MÜZİK: BİLGE ÜZGEN  
SÖZ : İLTER YEŞİLAY



ARANAĞHE

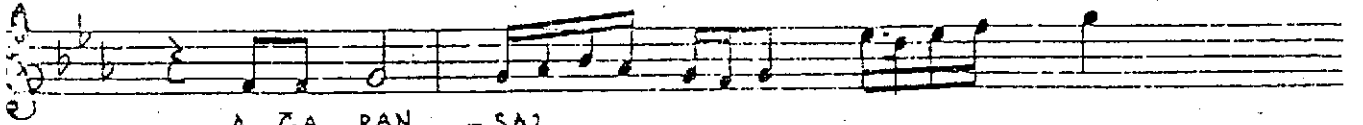


KADE RİH DE SAN Kİ SUÇLA CE ZA SIN



- SA2 ---

SA CİH DA BİR TU TAH TEL SİN



A ĞA RAN - SA2 ---

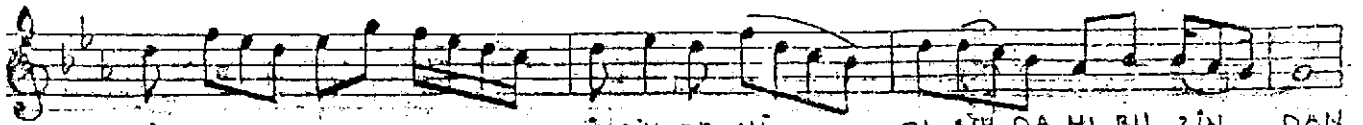


AŞK HI

- SA2 ---

ZU LÜH HÜ SÜN

CE VÂ BİN YOK



Kİ - SA2 ---

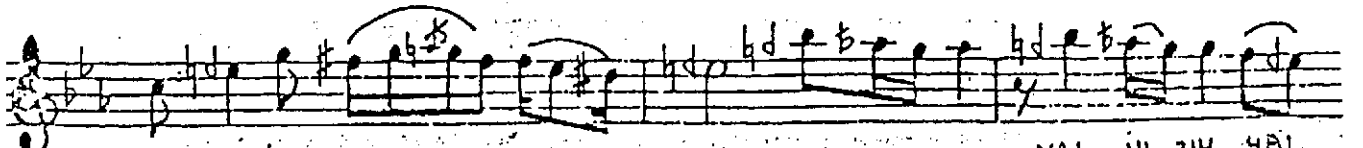
İ CİH DE Hİ

Dİ ŞİH DA MI BU ZİN DAN



- SA2 ---

- SA2 ---



YA NİH DA OL

SAN

DA - SA2 ---

YAL Nİ ZİH YAL

